

New tools for weather forecast verification at the Australian Bureau of Meteorology

Thomas Pagano (tompagan@bom.gov.au)
National Operations Centre, Melbourne



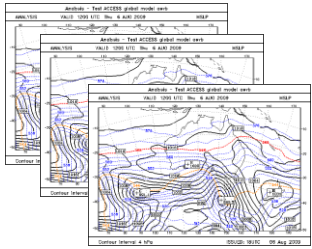
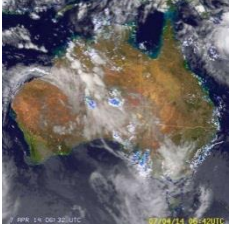
Australian Government
Bureau of Meteorology

Why verify?

- The Bureau is accountable to its customers and supporters: reporting Key Performance Indicators
- Forecaster learning happens best when there is rapid feedback: verification "situational awareness"
- Innovations should be evidence-based: e.g, Bureau is contemplating forecast automation

Weather forecasting process

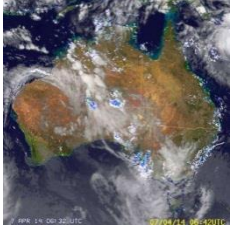
Observations



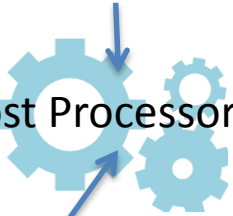
Multiple NWP
model outputs

Weather forecasting process

Observations

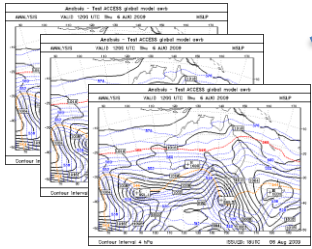
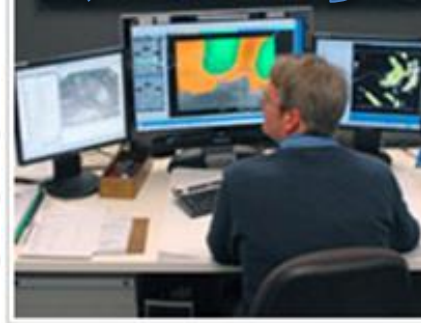
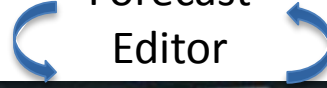


Post Processor



"OCF"

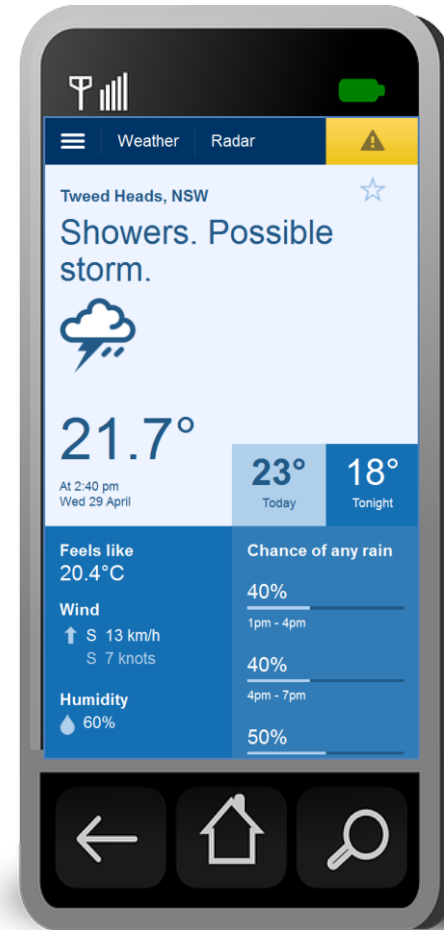
Graphical
Forecast
Editor



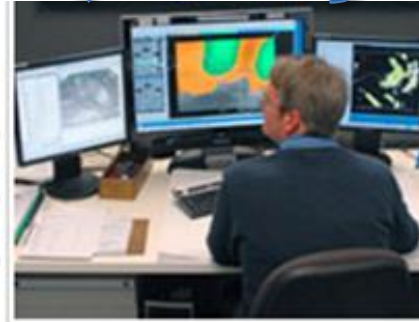
Multiple NWP
model outputs

Weather forecasting process

Automated 7 day text forecasts for 650 locations



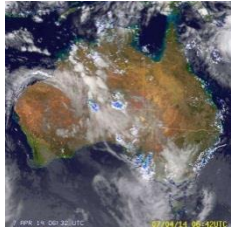
Graphical Forecast Editor



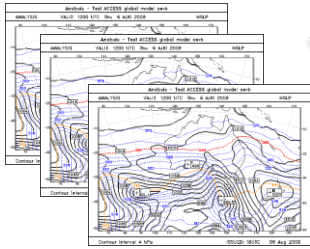
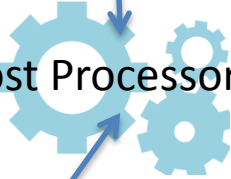
"OCF"

"Official"

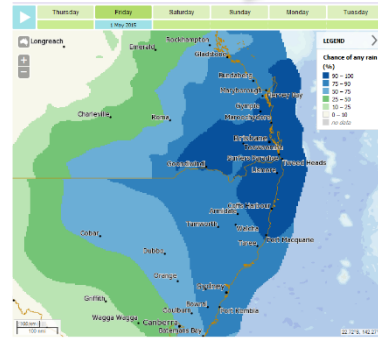
Observations



Post Processor



Multiple NWP model outputs



6 km resolution graphical forecasts



Gridded downstream applications

View the current warnings for Australia

Start typing, then select from list (town, city, postcode or lat/lon)

Locate Find me Time zone AEDT

LATEST WEATHER

Current Temp, Rain, Wind ...

FORECASTS

Rainfall Forecasts

Wind Forecasts

Waves Forecasts

Temperature Forecasts

3-hourly

- Air temperature
- Feels like

Daily

- Daily maximum
- Overnight minimum

Updated 30 Jan 2018, 7:18 AM AEDT

Clear Info

Overlay

Latest rain radar

Storms, Snow, Fog, Frost ...

Humidity Forecasts

UV Index Forecasts

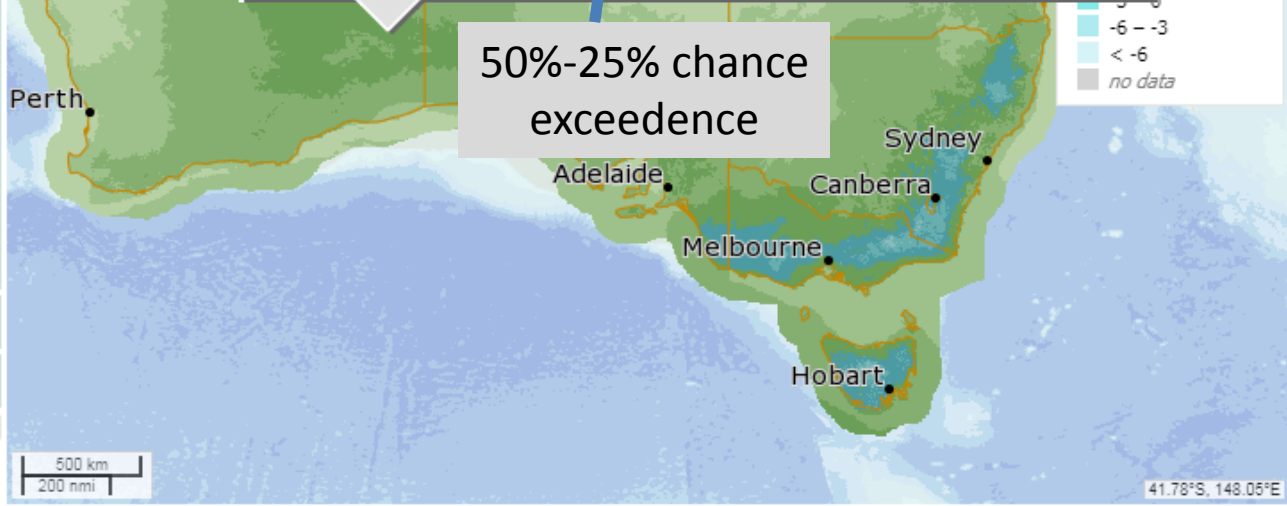
Monday Tuesday Wednesday Thursday Friday Saturday Sunday 2 Feb 2018



Forecast for Plumridge Lakes See text views for location

Save location	Tue. 30 Jan	Wed. 31 Jan	Thu. 1 Feb	Fri. 2 Feb	Sat. 3 Feb	Sun. 4 Feb	Mon. 5 Feb
Max (°C)	18	16	17	22	30	32	35
Min (°C)	-	13	12	13	15	18	20
Chance of rain (%)	-	100	90	90	40	30	30
Rainfall range (mm)	-	35 to 70	15 to 30	6 to 15	0 to 1	0 to 1	0 to 0.4
Issued 30 Jan 2018	Detail	Detail	Detail	Detail	Detail	Detail	Detail

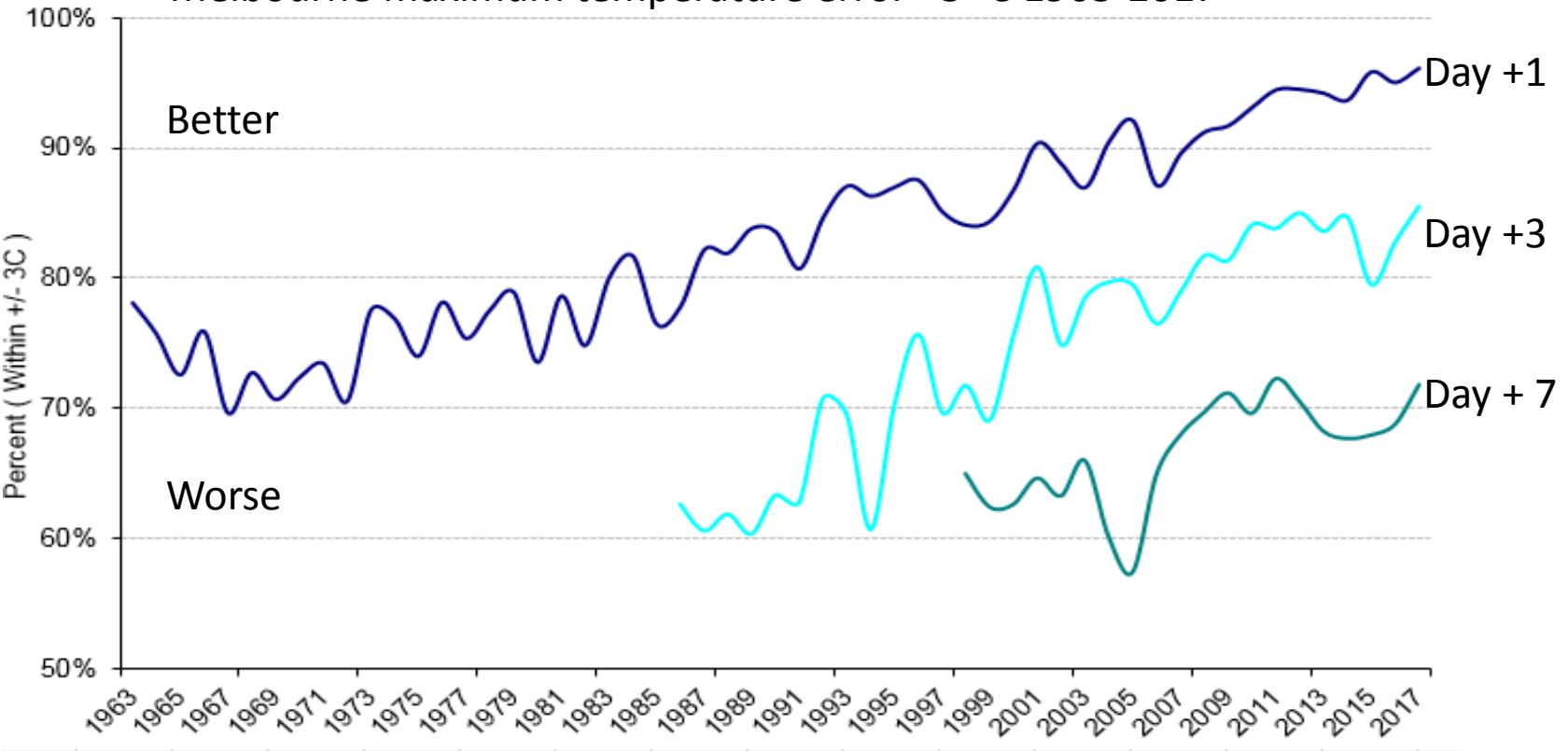
50%-25% chance exceedence



- Place names
- Search marker
- Saved locations
- Forecast locations
- Forecast districts
- Marine zones
- Roads & railways
- Rivers & lakes
- Catchments

Existing systems

Melbourne maximum temperature error $<3^{\circ}\text{C}$ 1963-2017



Long-term annual/quarterly statistics

Verification systems
developed incrementally
over about 15 years

Temperature

Precipitation

Wind speed/direction

Ocean wave height

Fire weather (humidity, temperature, wind)

New developments

Dashboards – KPIs – Meteograms

Interactive Dashboards

Audience is Bureau forecasters, used in morning briefings, retrospectives

Data gathering supported by python, visualisation by R-shiny

Temperature

Daily maximum, minimum

Precipitation

Daily PoP, mean precip, 75, 50, 25, 10% chance of exceedance

Daily Verification

Date: (end of valid period in UTC)

2017-10-27

Forecast lead day:



Region:

Northern Territory

New South Wales

Northern Territory

Queensland

South Australia

Tasmania

Victoria

Western Australia

[HELP](#)

[Long-term Verification](#)

[Report an issue](#)

[Charts](#) [Radar](#) [Policy/GPATS](#) [Temp Maps](#) [DailyPoP Maps](#) [DailyPrec](#)

[Data tables](#) [Links](#) [Database](#)

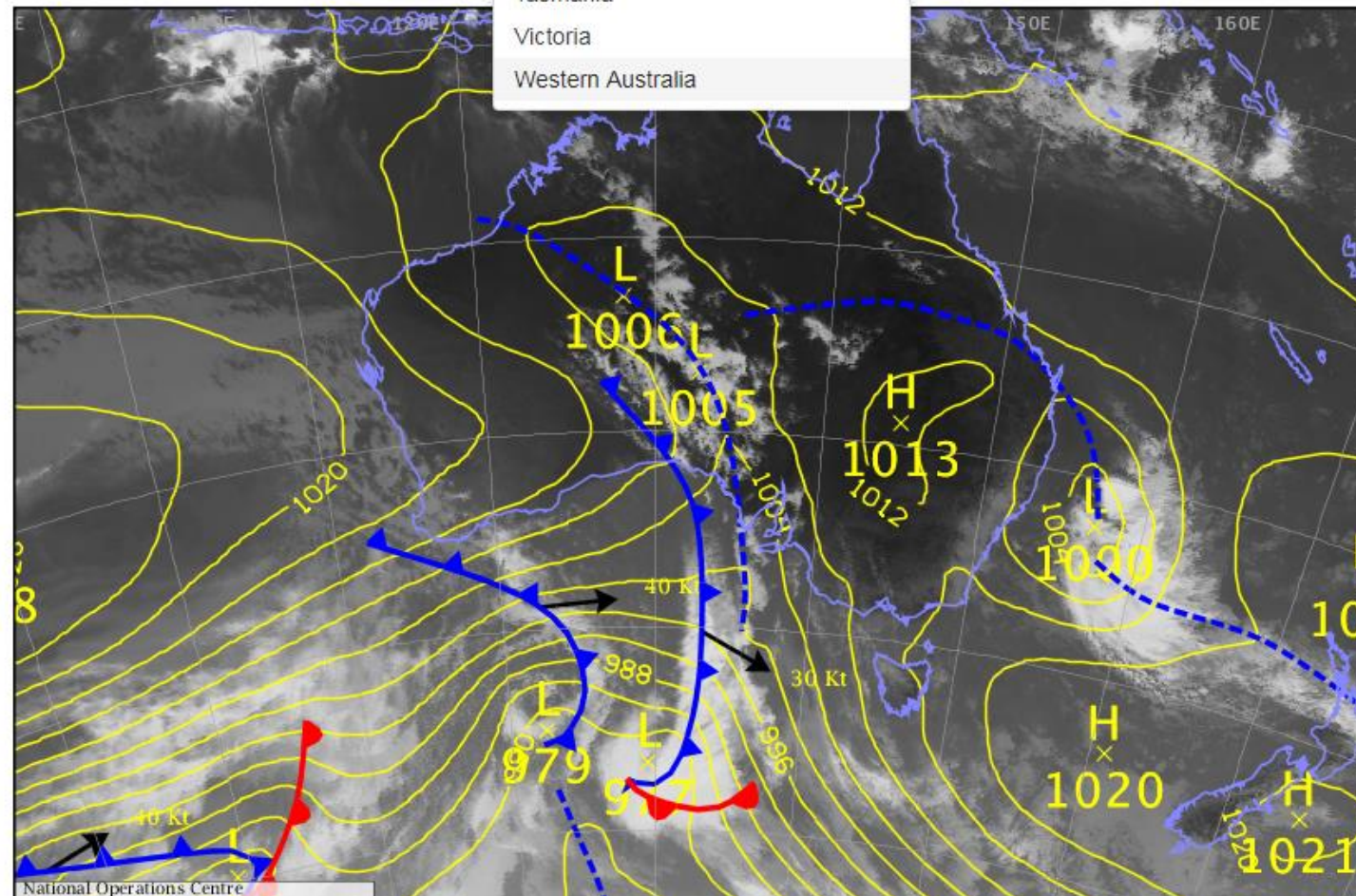
IR imagery with MSLP overlay from BNOC cha

Select a chart

- MSLP
- MSLP with IR
- 850 hPa
- 700 hPa
- 500 hPa
- 400 hPa
- 300 hPa
- 250 hPa
- 200 hPa

Hour (UTC)

- 18z
- 00z
- 06z
- 12z



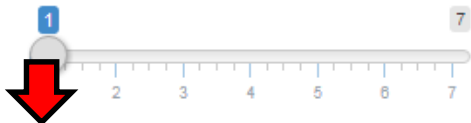
National Operations Centre

Daily Verification

Date: (end of valid period in UTC)

2017-10-27

Forecast lead day:



Region:

Northern Territory

[HELP](#)

[Long-term Verification](#)
[Report an issue](#)

- Charts
- Radar
- Policy/GPATS
- Temp Maps
- DailyPoP Maps
- DailyPrecip
- DailyPrecipYPct
- Precip 3hrly
- Data tables
- Links
- Database

MaxT or MinT

- MaxT
- MinT



Map type

- Observations
- Forecast
- Forecast error
- Official vs 18z PtOCF



Observed



Forecast

Forecast source

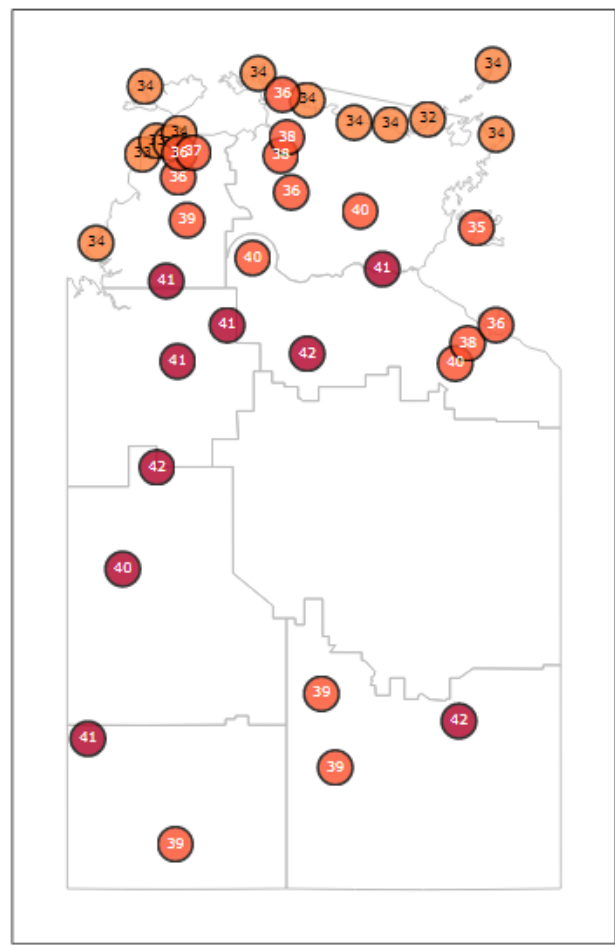
- Official
- 18z PtOCF



Error and |Score| filter

No filter

Observed MaxT: 2017-10-27



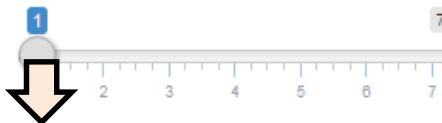
- 30C to 34.9C
- 35C to 39.9C
- 40C or greater

Daily Verification

Date: (end of valid period in UTC)

2017-10-27

Forecast lead day:



Region:

Northern Territory

[HELP](#)

[Long-term Verification](#)
[Report an issue](#)

[Charts](#) [Radar](#) [Policy/GPATs](#) [Temp Maps](#) [DailyPoP Maps](#) [DailyPrecip](#) [DailyPrecipYPct](#) [Precip 3hrly](#) [Data tables](#) [Links](#) [Database](#)

MaxT or MinT

MaxT

MinT



Map type

Observations

Forecast

Forecast error

Official vs 18z PtOCF



Error

Forecast source

Official

18z PtOCF



Error and |Score| filter

No filter

No filter

> 1C

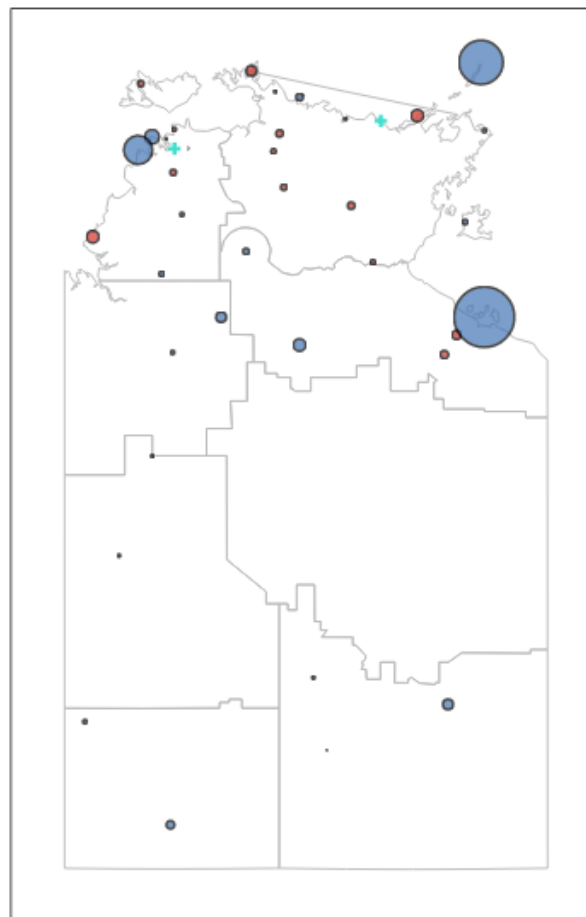
> 2C

> 3C

> 4C

> 5C

Official MaxT forecast error:2017-10-27



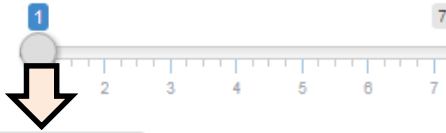
- Forecast too hot
- Forecast too cold
- + Perfect forecast

Daily Verification

Date: (end of valid period in UTC)

2017-10-28

Forecast lead day:



Region:

Northern Territory

[HELP](#)

[Long-term Verification](#)
[Report an issue](#)

- Charts
- Radar
- Policy/GPATS
- Temp Maps
- DailyPoP Maps
- DailyPrecip
- DailyPrecipYPct
- Precip 3hrly
- Data tables
- Links
- Database

MaxT or MinT

MaxT

MinT



Map type

Observations

Forecast

Forecast error

Official vs 18z PtOCF



Forecast source

Official

18z PtOCF



Error and |Score| filter

No filter

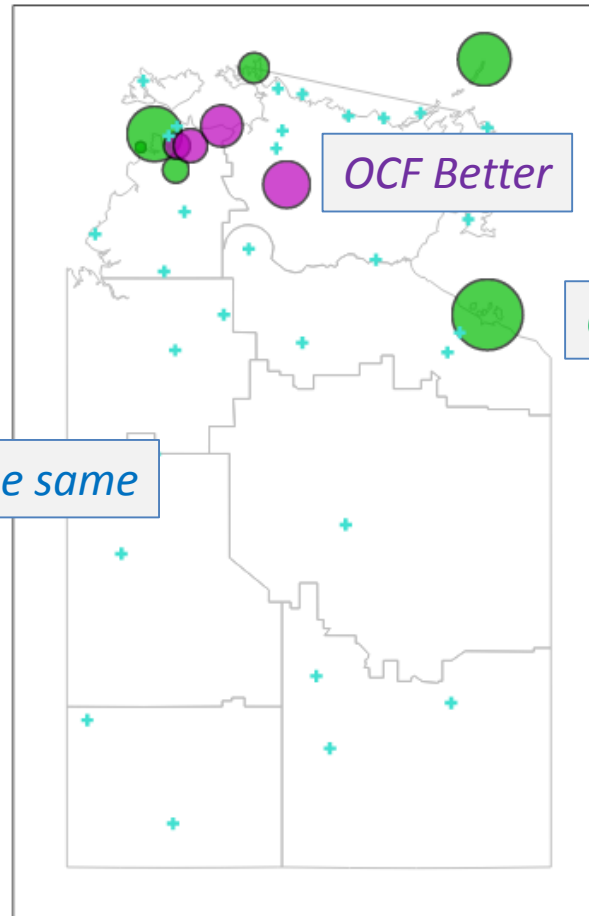
Which is better?

The same

OCF Better

Official better

Official MaxT vs PtOCF MaxT: 2017-10-28



- Official better
- PtOCF better
- Neither better


Long Term Verification

Verification period:

Forecast lead day:

Region:


[HELP](#)

[Daily Verification](#)
[Report an issue](#) 

2017-05-01 to 2017-11-25




Northern Territory

Get data for selected period 

Set a range of dates

Temp maps Station Temp Plots DailyPoP maps DailyPrecip maps Station DailyPoP/Precip Plots


MaxT or MinT

MaxT  *MaxT*

MinT

Map type

RMSE

Bias  *Bias*

Proportion of errors > X

Confidence that Official is better

Forecast source


Official

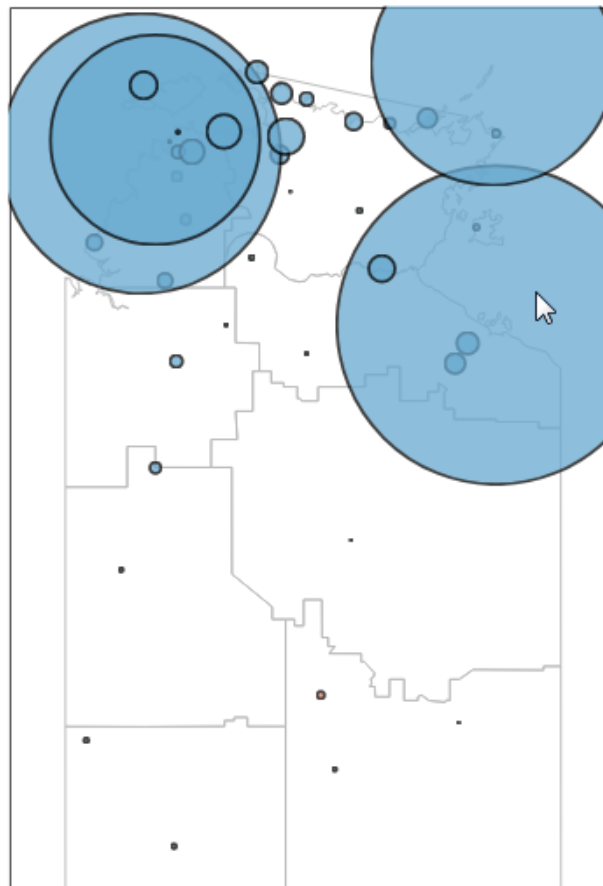
18z PtOCF



Official vs 18z PtOCF

Error threshold X



Official MaxT Bias: 2017-05-01 to 2017-11-25 



 Over forecast
 Under forecast

CENTRE ISLAND
Bias: -3.64C
Under forecast

Forecast too low

*~6 months
of forecasts*

Long Term Verification

Verification period: 2017-05-01 to 2017-11-25

Forecast lead day: 1

Region: Northern Territory

[HELP](#)
[Daily Verification](#)
[Report an issue](#)

Get data for selected period

*A land observation site
in an ocean gridcell*

- Temp maps
- Station Temp Plots
- DailyPoP maps
- DailyPrecip maps
- Station DailyPoP/Precip Plots

Select a station: CENTRE ISLAND

MaxT or MinT: MaxT MinT

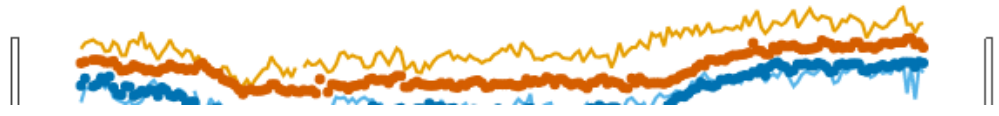
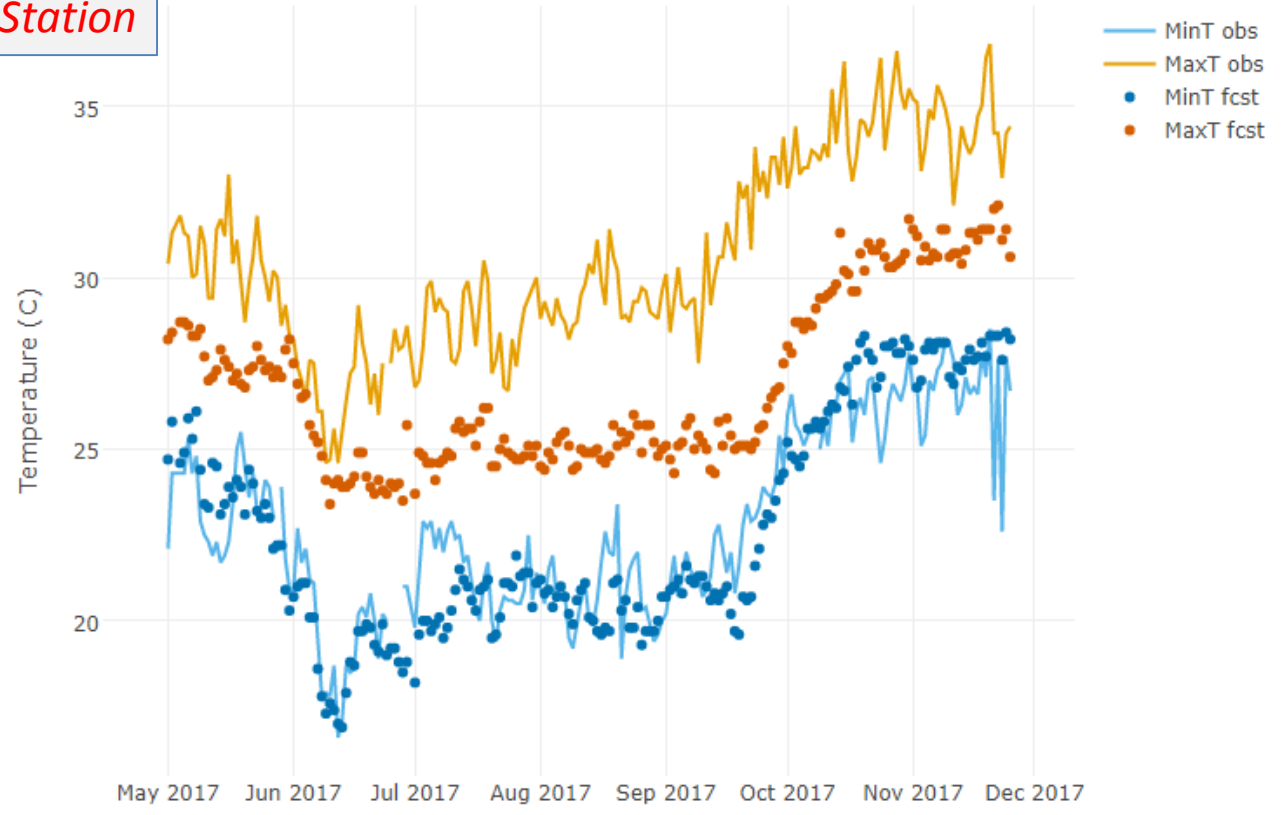
Plot type: Obs vs Forecast plot Timeseries

Forecast source: Official 18z PtOCF

Station

OCF

CENTRE ISLAND temperature time series: Observed vs PtOCF



Long Term Verification

Verification period:

2017-05-01 to 2017-11-25

Forecast lead day:



Region:

Victoria

[HELP](#)

[Daily Verification](#)

[Report an issue](#)

Get data for selected period

*A land observation site
on a peninsula*

Temp maps

Station Temp Plots

DailyPoP maps

DailyPrecip maps

Station DailyPoP/Precip Plots

Select a station

WILSONS PROMONTORY LIGHTHOUSE

Station

MaxT or MinT

MaxT

MinT

Plot type

Obs vs Forecast plot

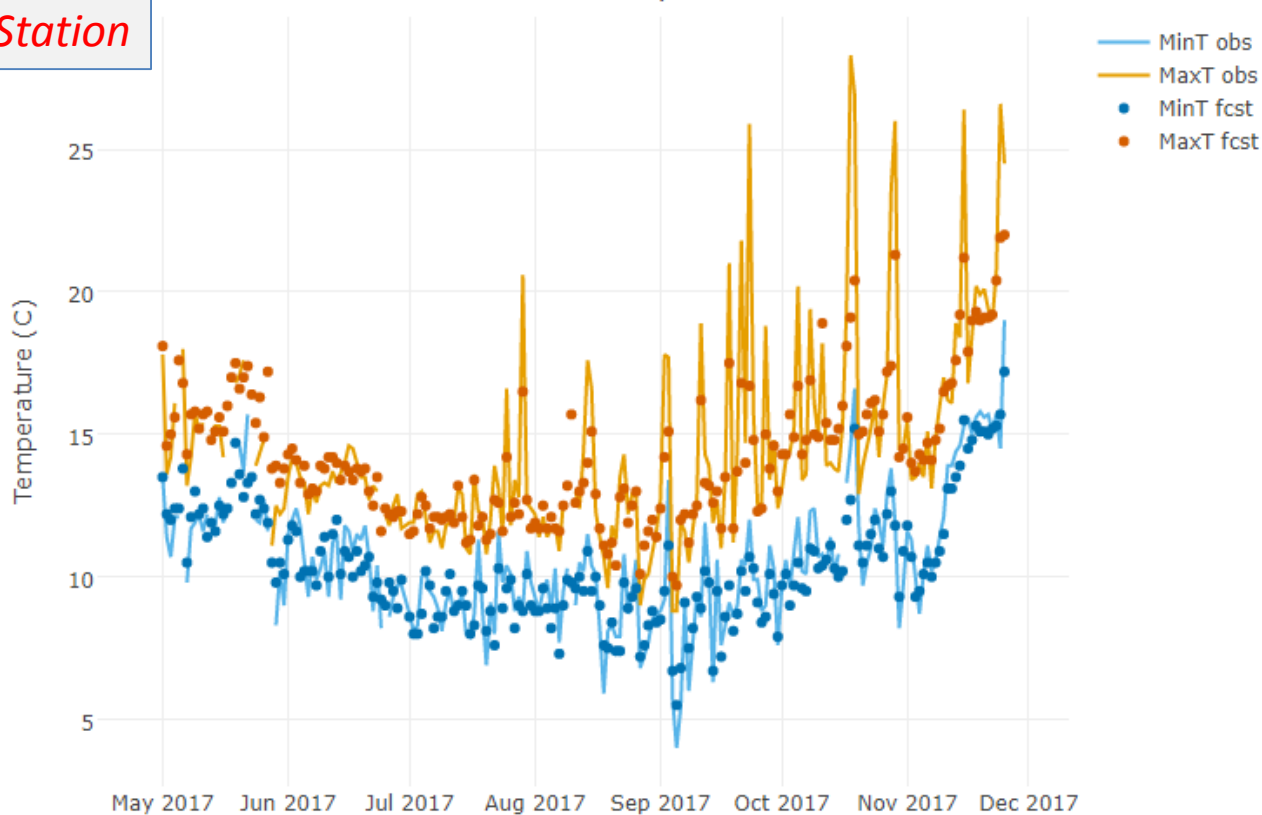
Timeseries

Forecast source

Official

18z PTOCF

WILSONS PROMONTORY LIGHTHOUSE temperature time series: Observed vs PTOCF



Long Term Verification

Verification period:

2017-05-01 to 2017-11-25

Forecast lead day:



Region:

Victoria

[HELP](#)
[Daily Verification](#)
[Report an issue](#)

Get data for selected period

Temp maps Station Temp Plots DailyPoP maps DailyPrecip maps Station DailyPoP/Precip Plots

Select a station

WILSONS PROMONTORY LIGHTHOUSE

MaxT or MinT

MaxT
 MinT

Plot type

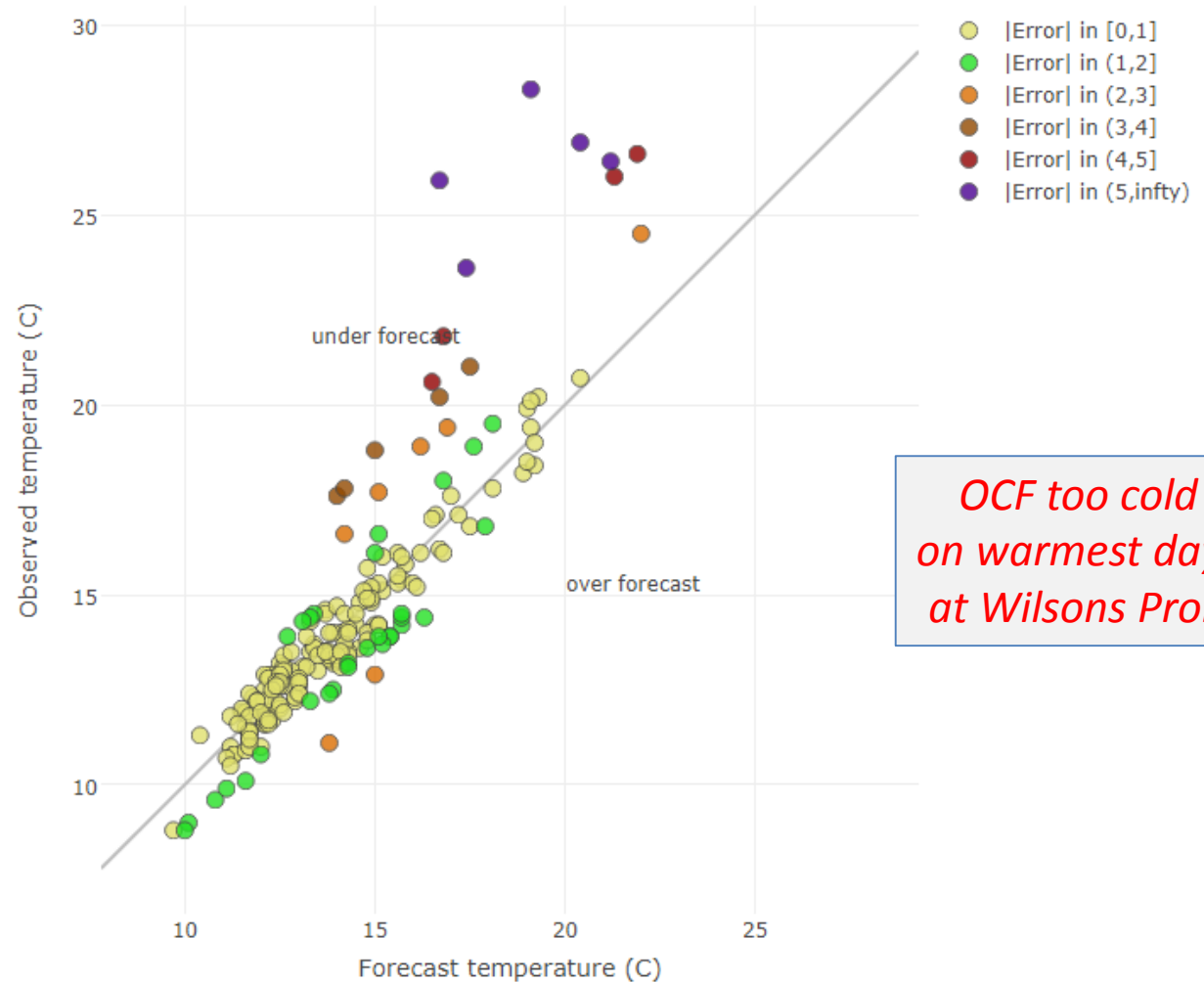
Obs vs Forecast plot
 Timeseries

Forecast source

Official
 18z PtOCF

OCF

vs Observed MaxT at WILSONS PROMONTORY LIGHTHOUSE: 2017-05-01 to 2017-



Long Term Verification

Verification period:

2017-05-01 to 2017-11-25

Forecast lead day:



Region:

Victoria

[HELP](#)

[Daily Verification](#)

[Report an issue](#)

Get data for selected period

Temp maps

Station Temp Plots

DailyPoP maps

DailyPrecip maps

Station DailyPoP/Precip Plots

Select a station

WILSONS PROMONTORY LIGHTHOUSE

MaxT or MinT

MaxT

MinT

Plot type

Obs vs Forecast plot

Timeseries

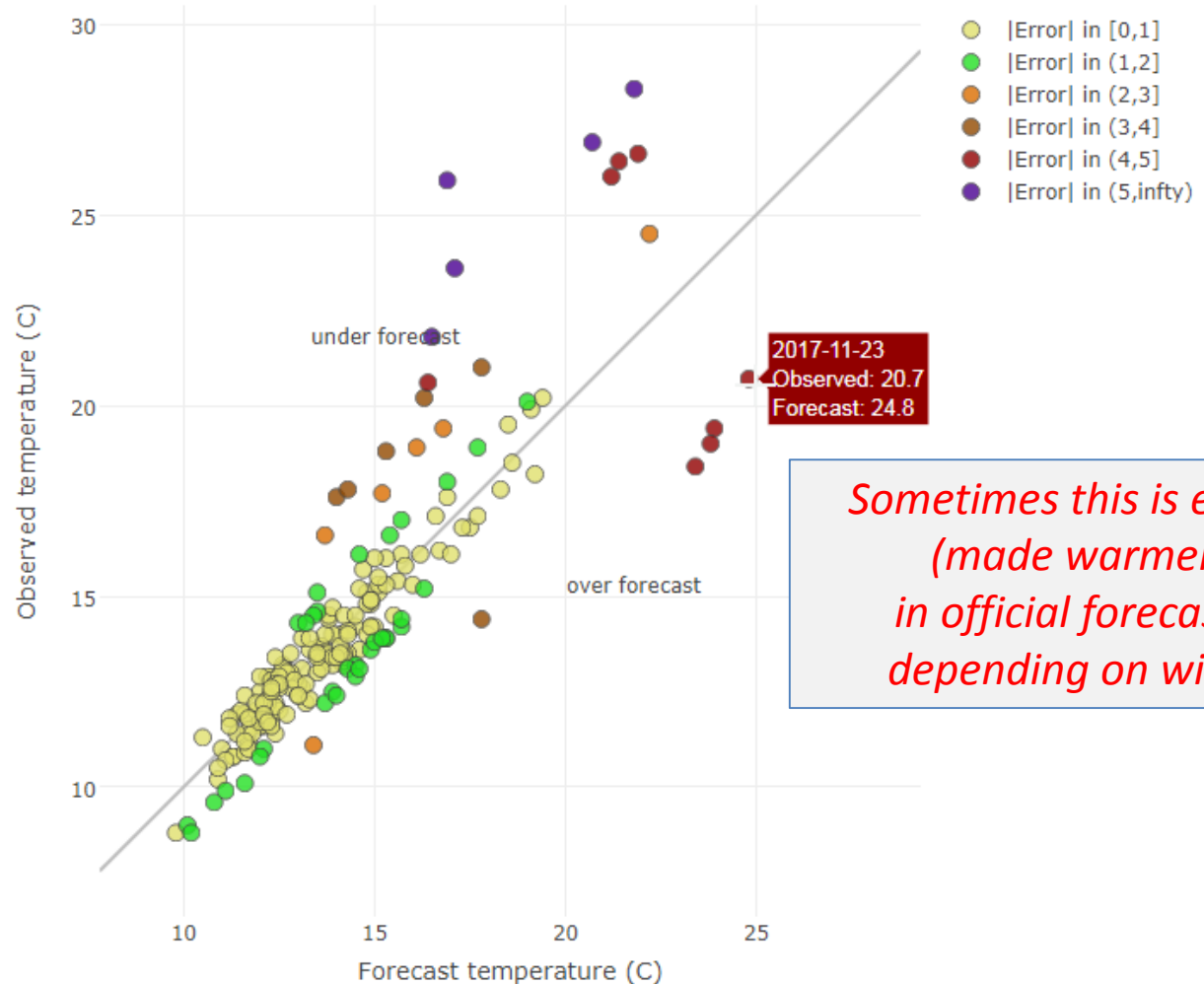
Forecast source

Official

18z PtOCF

Official

I vs Observed MaxT at WILSONS PROMONTORY LIGHTHOUSE: 2017-05-01 to 2017-11-25



Sometimes this is edited (made warmer) in official forecasts, depending on winds

Daily Verification

Date: (end of valid period in UTC)

2017-09-23

Forecast lead day:



Region:

South Australia

- Charts
- Radar
- Policy/GPATS
- Temp Maps
- DailyPoP Maps
- DailyPrecip
- DailyPrecipYPct
- Precip 3hrly
- Data tables
- Links
- Database

Map type

- Observed precip
- Forecast with obs
- Forecast error
- Official vs OCF
- Reliability diagram

Observed

Forecast source

- Official
- 18z OCF

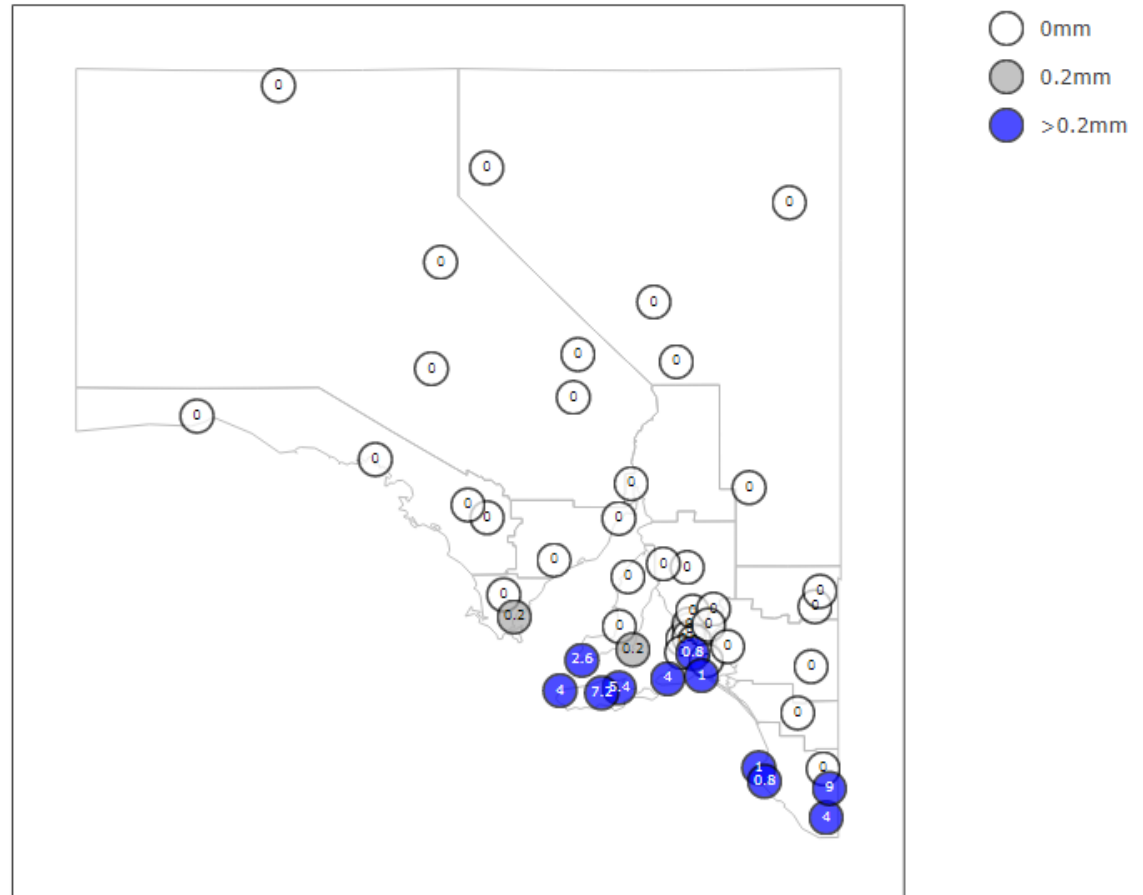
Filter 0.2mm obs

- Yes
- No

Error and |Score| filter

No filter

Precipitation 15z to 15z:2017-09-23

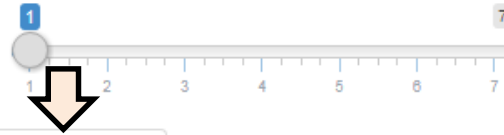


Daily Verification

Date: (end of valid period in UTC)

2017-09-23

Forecast lead day:



Region:

South Australia

Charts Radar Policy/GPATS Temp Maps **DailyPoP Maps** DailyPrecip DailyPrecipYPct Precip 3hrly Data tables Links Database

Map type

- Observed precip
- Forecast with obs
- Forecast error
- Official vs OCF
- Reliability diagram

Forecast source

- Official
- 18z OCF

Filter 0.2mm obs

- Yes
- No

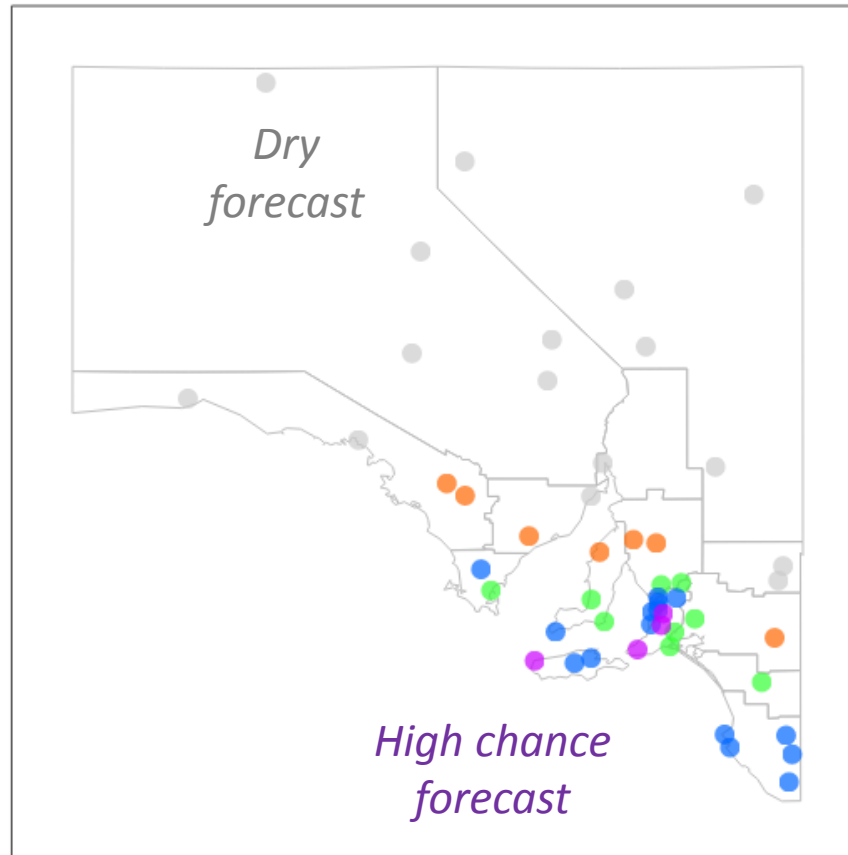
Error and |Score| filter

No filter



*Forecast
PoP*

Official DailyPoP vs Observed Precip: 2017-09-23

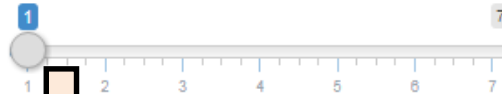


Daily Verification

Date: (end of valid period in UTC)

2017-09-23

Forecast lead day:



Region:

South Australia

- Charts
- Radar
- Policy/GPATS
- Temp Maps
- DailyPoP Maps
- DailyPrecip
- DailyPrecipYPct
- Precip 3hrly
- Data tables
- Links
- Database

Map type

- Observed precip
- Forecast with obs
- Forecast error
- Official vs OCF
- Reliability diagram



Forecast PoP

Forecast source

- Official
- 18z OCF

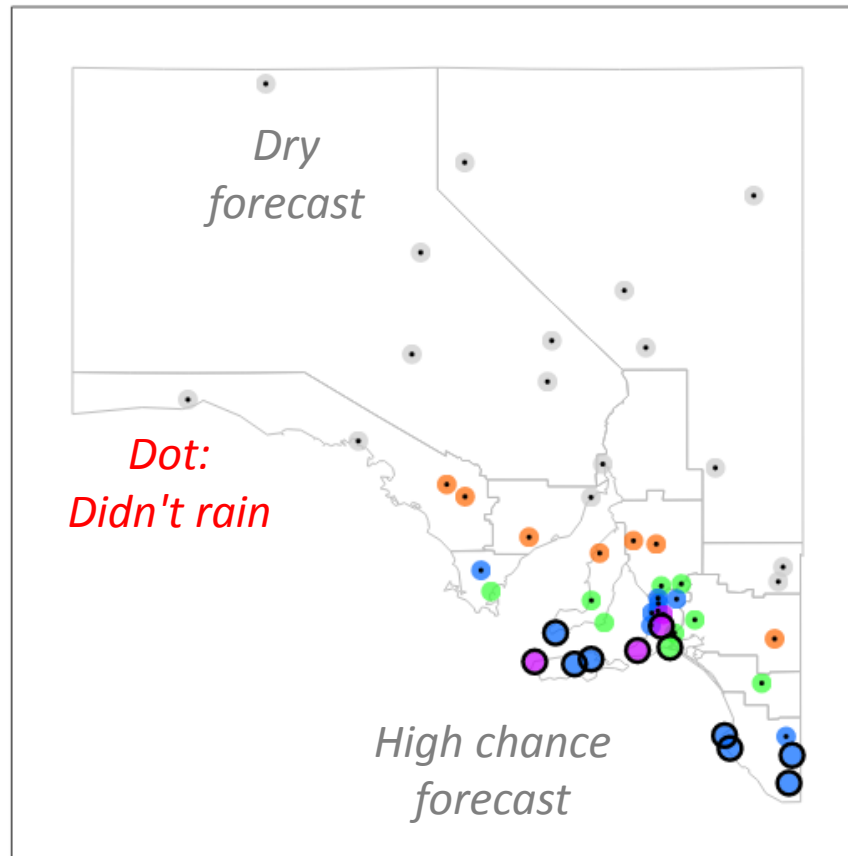
Filter 0.2mm obs

- Yes
- No

Error and |Score| filter

No filter

Official DailyPoP vs Observed Precip: 2017-09-23



Dot:
Didn't rain

High chance
forecast

- Near zero (< 15%)
- Slight (15% to 34%)
- Medium (35% to 64%)
- High (65% to 84%)
- Very High (>= 85%)
- > 0.2 mm
- 0.2 mm
- 0 mm

Any legend is clickable to make parts appear or disappear

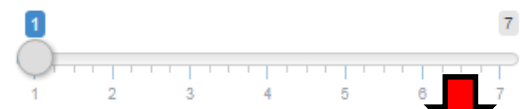
Circle:
Rained > 0.2mm

Daily Verification

Date: (end of valid period in UTC)

2017-09-23

Forecast lead day:



Region:

South Australia

- Charts
- Radar
- Policy/GPATS
- Temp Maps
- DailyPoP Maps
- DailyPrecip
- DailyPrecipYPct**
- Precip 3hrly
- Data tables
- Links
- Database

Chart type

- DailyPrecipYPct forecast
- DailyPrecipYPct forecast vs obs map
- DailyPrecipYPct reliability graph

Forecast

Y percentage threshold

- 75
- 50
- 25
- 10

25%ile

Forecast source

- Official
- 18z OCF

Filters

Forecast DailyPrecip >=

0.5

Observed Precip >=

0

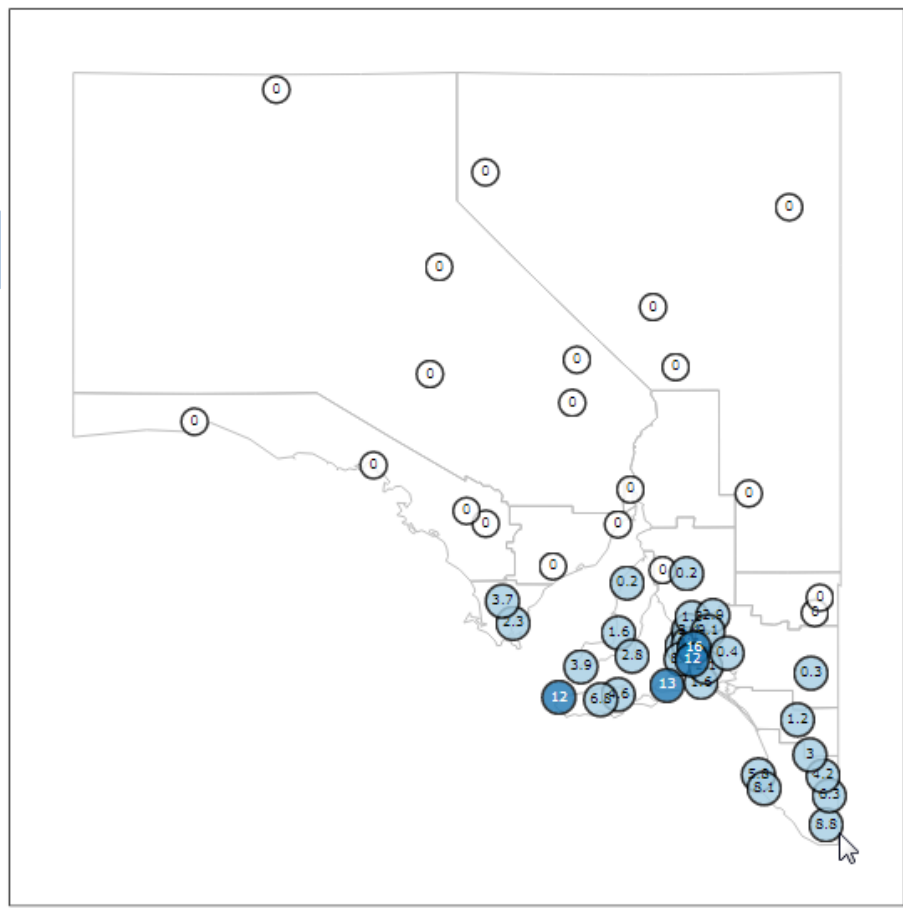
DailyPoP >=

0

District (Ctrl+click for multiple selections)

All districts

Official forecast DailyPrecip25Pct: 2017-09-23

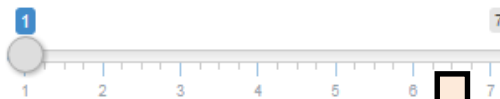


Daily Verification

Date: (end of valid period in UTC)

2017-09-23

Forecast lead day:



Region:

South Australia

- Charts
- Radar
- Policy/GPATS
- Temp Maps
- DailyPoP Maps
- DailyPrecip
- DailyPrecipYPct
- Precip 3hrly
- Data tables
- Links
- Database

Chart type

- DailyPrecipYPct forecast map
- DailyPrecipYPct forecast vs obs map
- DailyPrecipYPct reliability graph

Y percentage threshold

- 75
- 50
- 25
- 10

Forecast source

- Official
- 18z OCF

Filters

Forecast DailyPrecip >=

0.5

Observed Precip >=

0

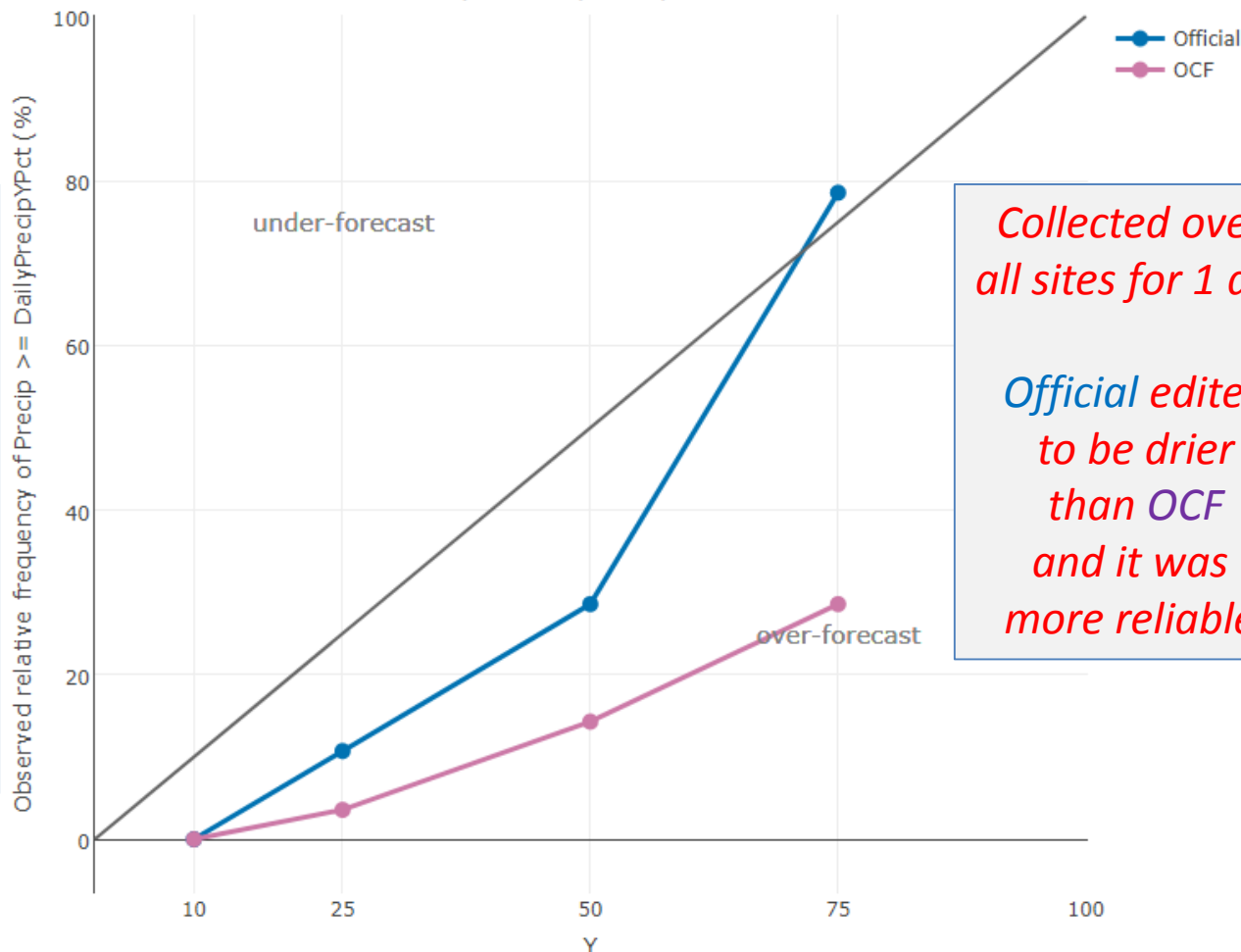
DailyPoP >=

0

District (Ctrl+click for multiple selections)

All districts

Reliability of DailyPrecipYPct: 2017-09-23



Observed frequency exceeded

Collected over all sites for 1 day
Official edited to be drier than OCF and it was more reliable

Forecast % chance of exceeding

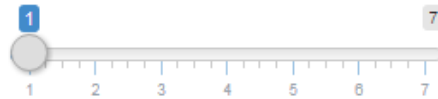
Long Term Verification

Verification period:

2016-11-26 to 2017-11-25

Get data for selected period

Forecast lead day:



Region:

Victoria

[HELP](#)

[Daily Verification](#)

[Report an issue](#)

Temp maps

Station Temp Plots

DailyPoP maps

DailyPrecip maps

Station DailyPoP/Precip Plots

Select a station

MELBOURNE (OLYMPIC PARK)

Plot type

- DailyPrecip Forecast vs Obs plot
- DailyPrecip time series
- DailyPoP reliability
- DailyPrecipYPct reliability

Forecast source

- Official
- OCF

Filter for DailyPoP reliability

- Include 0.2mm observations

Filters for DailyPrecipYPct reliability

Forecast DailyPrecip >=

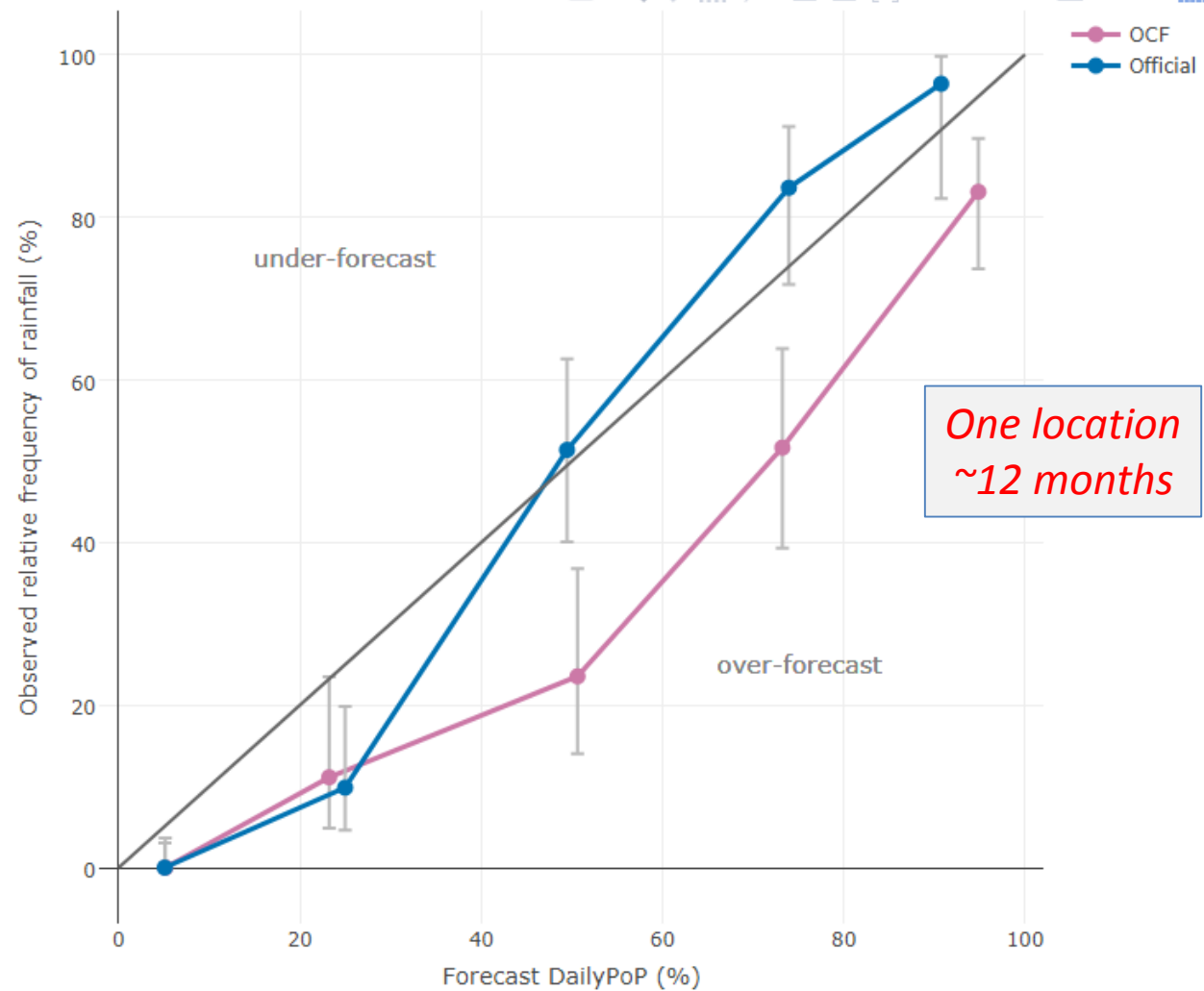
0.5

Observed Precip >=

0

DailyPoP >=

Reliability of DailyPoP at MELBOURNE (OLYMPIC PARK), 2016-11-26 to 2017-11-25



Long Term Verification

Verification period:

Forecast lead day:

Region:

[HELP](#)

2017-07-01 to 2018-01-29



Victoria

[Meteograms](#)

[Daily Verification](#)

[Report an issue](#)

Get data for selected period

Precip skill maps



Temp maps

Station Temp Plots

DailyPoP maps

DailyPrecip maps

Station DailyPoP/Precip Plots

Select a station

MELBOURNE (OLYMPIC PARK)

Plot type

DailyPrecip Forecast vs Obs plot

DailyPrecip time series

DailyPoP reliability

DailyPrecipYPct reliability

Forecast source

Official

OCF

Filter for DailyPoP reliability

Include 0.2mm observations

Filters for DailyPrecipYPct reliability

Forecast DailyPrecip >=

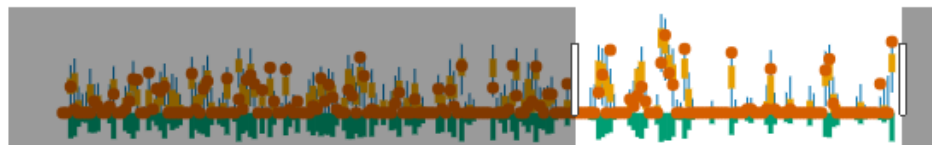
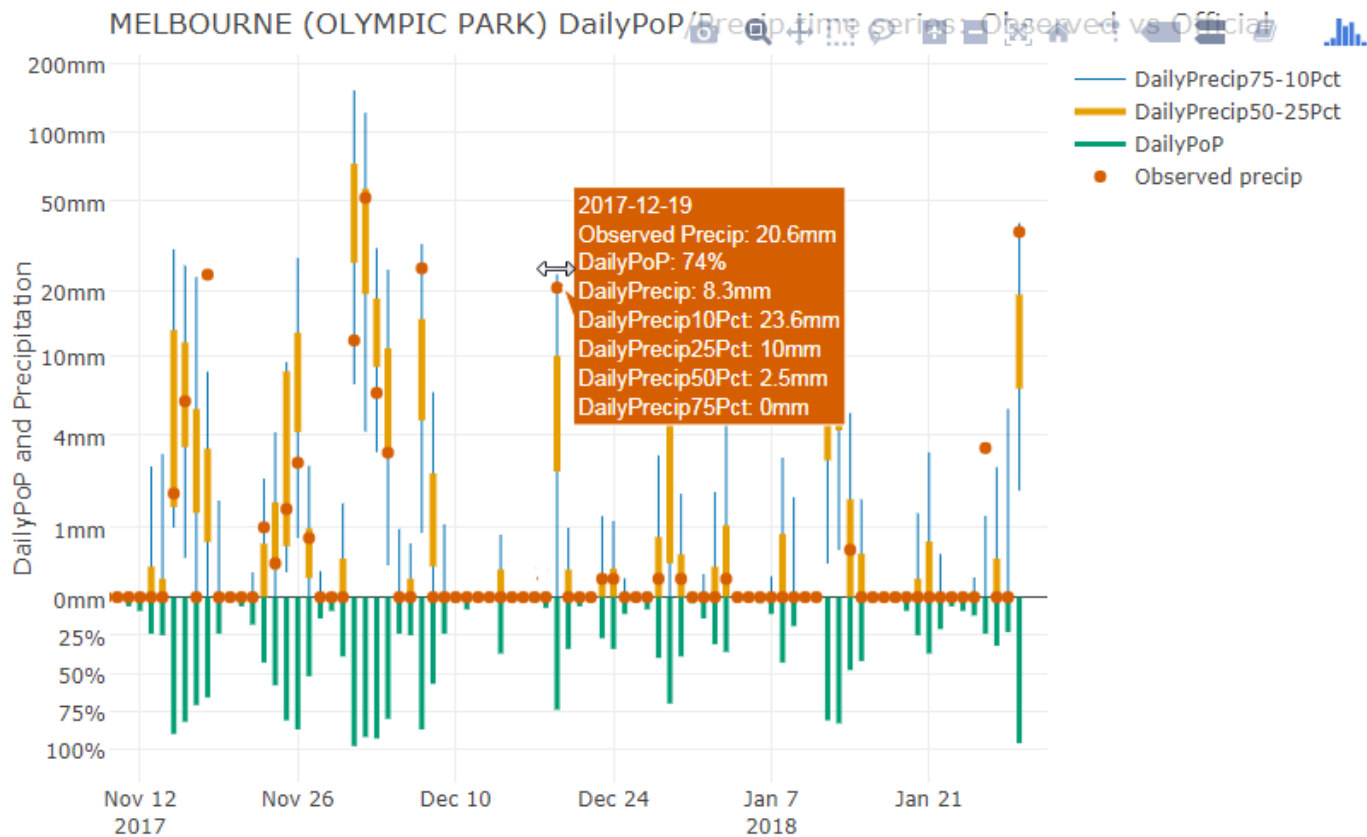
0.5

Observed Precip >=

0

DailyPoP >=

0



New developments

Dashboards – KPIs – Meteograms

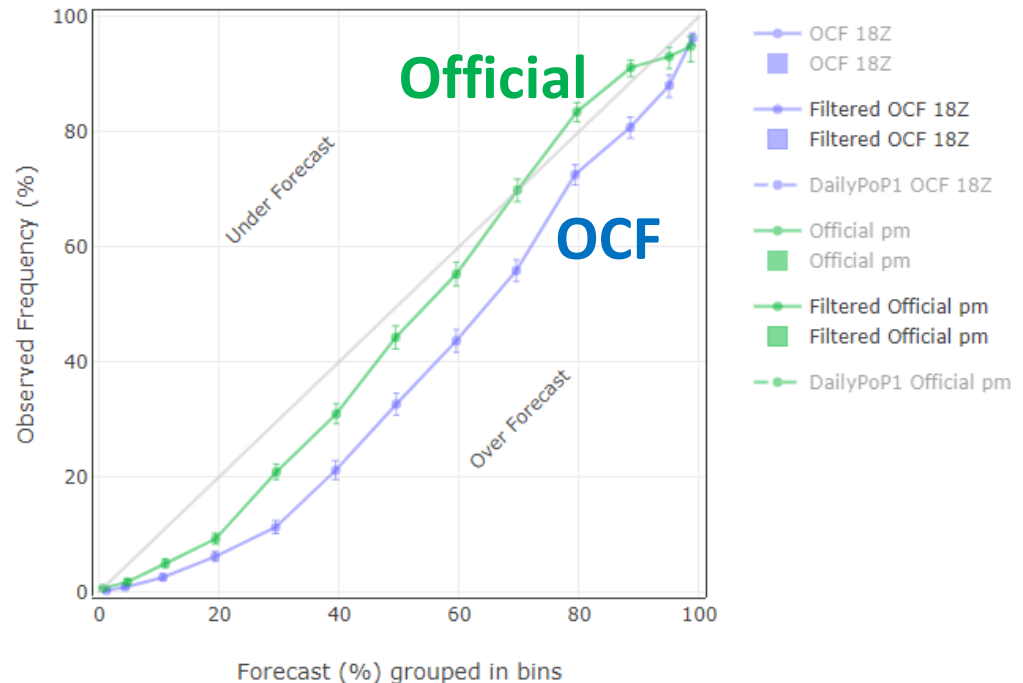
Key Performance Indicators

Temperature (daily maximum and minimum)
% forecasts within 2 degrees C

Precipitation (daily probability of precipitation):
Reliability diagram

Wind (at ~4 pm):
% forecasts within 5 knots
% within 30 degrees direction

Reliability Diagram for DailyPoP
Cross-region - Special - all
last 90 days to 2018-01-23; Lead day 1

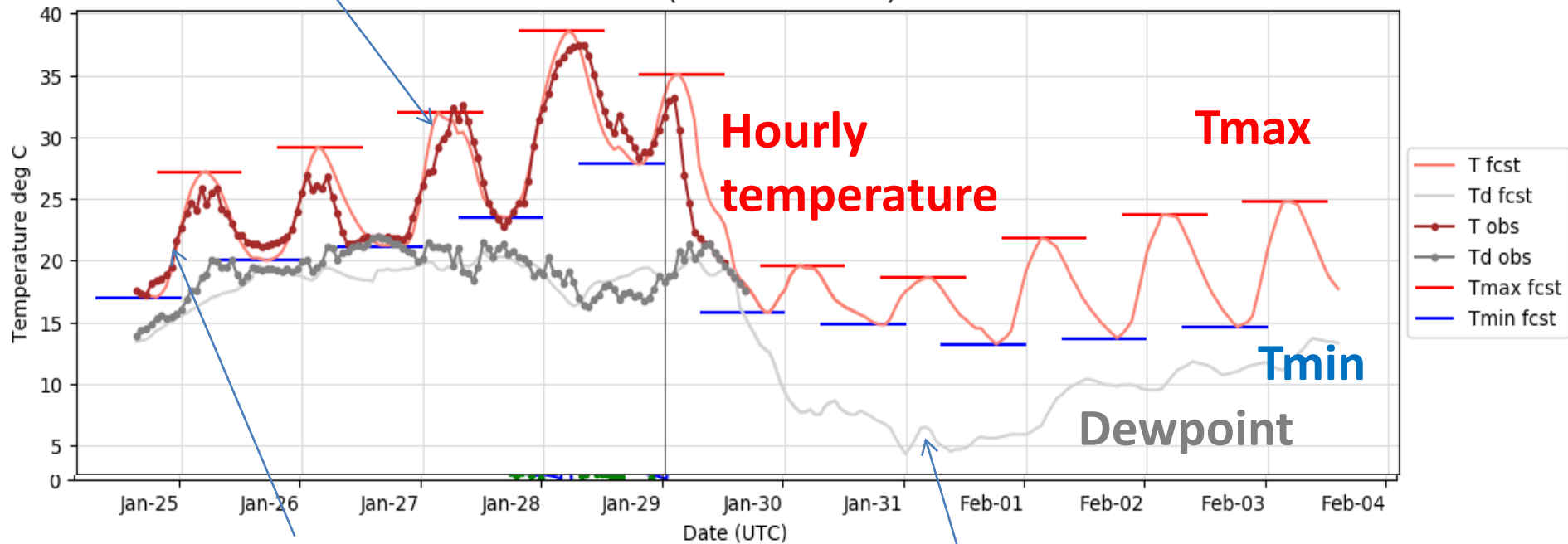


New developments

Dashboards – KPIs – Meteograms

Past forecasts
(1 day leadtime)

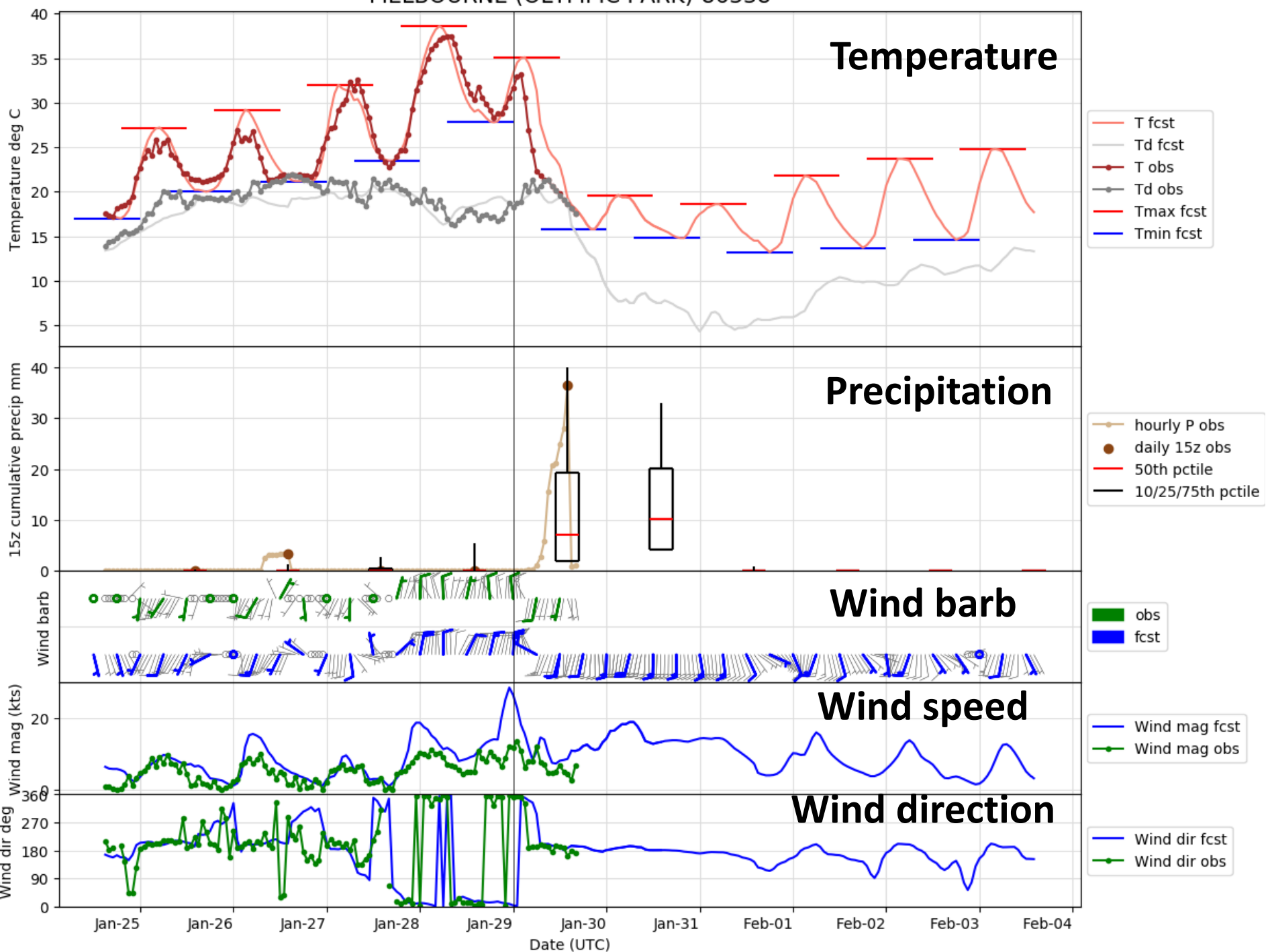
MELBOURNE (OLYMPIC PARK)-86338



Observations

"Now"

Latest forecast
(multiple leadtimes)



Plans and challenges

- Expansion of dashboards for wind, waves, humidity, fire weather
- Push alerting for large/persistent errors (in testing now)
- Evaluation against competitors e.g. weather.com
- Better performance indicators for the public
- Understandable, relevant and defensible rainfall metrics are elusive

Public webpage

tompagan@bom.gov.au



[Bureau Home](#) > Our Performance: Bureau Forecast Accuracy

Bureau Forecast Accuracy

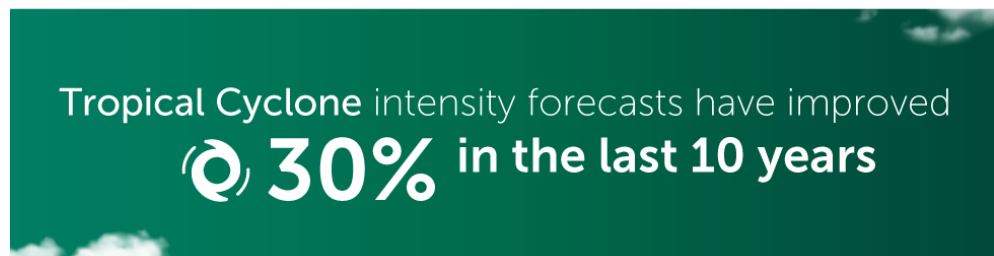
Our four-day forecasts today are as good as a one-day forecast was in the 1980s

We produce over **1 million forecasts and warnings** each year.

These forecasts are vital for safety and decision-making across the community, government, and industry.

Improving our forecast performance is important to keep pace with increasing community expectations.

By comparing forecasts to actual measurements from our vast network of observing equipment, we can monitor our performance and track our improvements.



Thanks: Rob Taggart, Michael Foley, Ioanna Ioannou, Lex Hider, Aihong Zhong, Denis Margetic, Forecaster Consultative Team